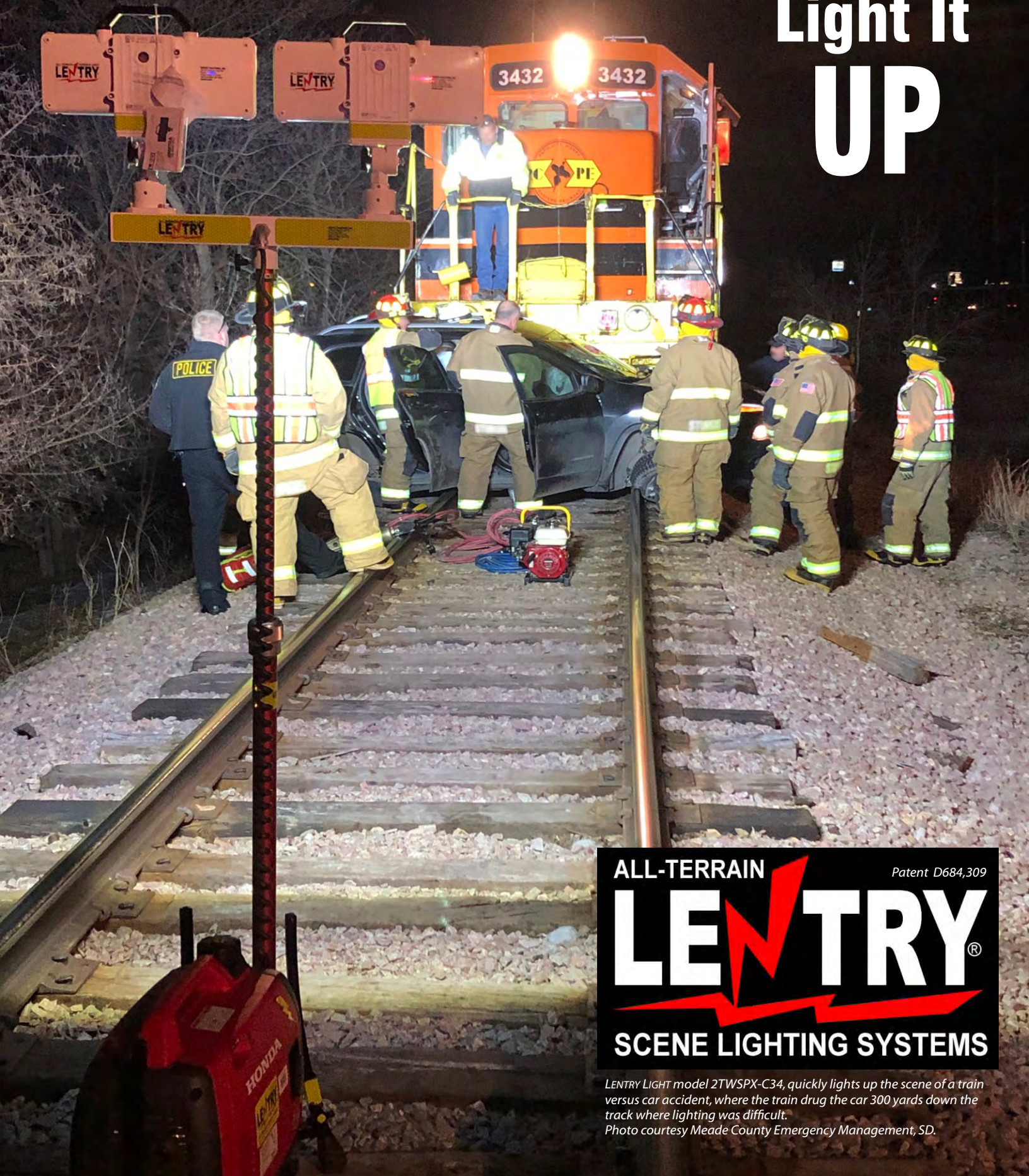


Portable Light Towers with Legs

Light It
UP



ALL-TERRAIN

Patent D684,309

LENTRY®

SCENE LIGHTING SYSTEMS

*LENTRY LIGHT model 2TWSPX-C34, quickly lights up the scene of a train versus car accident, where the train drug the car 300 yards down the track where lighting was difficult.
Photo courtesy Meade County Emergency Management, SD.*



Why Choose **All-Terrain** LENTRY PORTABLE LIGHTING?

- Lights are instant on / instant off; no cool down time needed.
- Lights are bright and efficient (20,000 to 56,000 lumens).
- Independently adjustable legs ensure a solid stance on any terrain: uneven, steep, rocky, wet, snow covered...
- LENTRY SYSTEMS are self-contained; no cords to trip over; no batteries to charge.
- LENTRY UTILITY SYSTEMS utilize preexisting power sources, allowing them to be placed wherever light is needed, including in enclosed spaces.
- Lights telescope, rotate, and articulate for ideal aiming.
- Legs adjust quickly, allowing you—not the terrain—to determine the ideal location.
- Poles and lights disconnect from the rest of the unit for storage, with the turn of a knob.
- The generator on LENTRY SYSTEMS is always level and raised above sand, snow, water, rocks, and debris.
- Controls are lifted within easy reach.
- Legs retract for compact storage and protect the generator.
- Robust, heavy-duty frames are guaranteed not to bend or break.
- One person deployment and break down in seconds.
- Long run times (nearly 9 hours on some models) before adding more fuel.
- Military-grade, lifetime-guaranteed case available with some models.
- Made in the USA.
- Five year warranties on workmanship and materials plus Lifetime Factory Support.
- Industries served include fire/rescue, emergency response, utilities, construction, law enforcement, public works, and rail.



LEFT: LENTRY Model 20PUPX with a 2200W generator and an XT height 750W Optup Halogen, with the legs extended and telescoping pole fully retracted.

BELOW: LENTRY Model 1SPECX-C23 lighting the area where fireworks were sorted before being transported to the barge. Photo courtesy Pyro Spec, CA.



LENTY UTILITY LIGHTING SYSTEMS

LENTY UTILITY LIGHTING SYSTEMS (shown below) are for those who already have a power source available or who currently have a LENTRY SYSTEM and would like to run a second light in another location. They can be placed anywhere, inside or out, limited only by the length of the power cord.

LENTY UTILITY LIGHTING SYSTEMS are available with the following:

- V-Spec LED or 2-Headed V-Spec LED (28,000 - 56,000 lumens);
- A single XT height or Hi-Lite height pole;
- Utility Stand* with Adapter; and
- Case C2318, C3422, or C5022, depending on which light and pole are to be stored.

**Available without the Utility Stand for you to use your own.*



ABOVE: LENTRY UTILITY SYSTEM Model TWSPX-SS-C34 (case not shown), consisting of a 2-Headed V-Spec LED, XT height pole, Utility Stand with Adapter, and Case C3422 which holds the light head during storage and transport.

RIGHT: LENTRY Model 2TWSPX-C34 (case not shown), lighting the recovery of a submerged vehicle. Photo courtesy of Meade County Emergency Management, SD.

Multiple accessories available, expanding the functionality of any LENTRY LIGHTING SYSTEM

Accessories shown:

LEFT: Pole Light Truck Mount (circled in picture). Allows the lights on any LENTRY SYSTEM to serve as portable lighting and truck-mounted lighting. Photo courtesy Connecticut Water Company, CT.

ABOVE RIGHT: Receiver Hitch Pole Mount. Holds any LENTRY telescoping pole and light, expanding the versatility by providing additional mounting options.

RIGHT: Wheel & Handle Kit. Allows one person to easily transport the frame/generator portion of a 2200W LENTRY LIGHT SYSTEM. Vertical handle retracts when not in use.

BELOW: V-Spec LED Cases. Three cases vary in size and designed to hold V-Spec LEDs and other components. C5022 (left), C3422 (front, bottom), and C2318 (front, top).



What are LENTRY LIGHTING SYSTEMS are who uses them?

LENTY LIGHTS are used world-wide to illuminate emergency scenes, work sites, job sites, construction projects, borders, crime scenes, railroads, special events, disaster cleanup, search and rescue operations, maintenance and repair crews, utility work, check points, flaggers and traffic control, evening sports, and more.

The list of industries that use LENTRY LIGHTS expands by the day, but includes disaster preparedness and recovery, emergency response, traffic control, law enforcement, military, border patrol, crime scene investigation, search and rescue, video production, event planning, construction, public utilities, municipalities, towing and recovery, energy, and rail.





LEFT: LENTRY Model 1STARX. Courtesy Therapeutic Riding Center of Huntington Beach, CA.

ABOVE: Before & after pictures of a construction site lit by LENTRY Model 2SPECX with a EU20i generator. Courtesy KB Trade GmbH, Switzerland.

ALL-TERRAIN

LENTRY®

PORTABLE LIGHT SYSTEMS



LENTRY Model 1STARS with a 1000W generator and standard height V-Star LED

Service and Support

Ventry Solutions, Inc. (VSI) is a small, family-owned and operated company founded in 1972. We build the best equipment possible—in safety, quality, and value—while keeping the designs simple for minimal maintenance and intuitive, cost-effective operation.

We make outSTANDING safety tools, which are backed by 5-year “no BS” warranties on workmanship and materials. We also provide exceptional customer service before, during, and after the sale. No matter when or from whom you purchase a VSI product, you’ll enjoy Lifetime Factory Support.

**Your work has enough risks.
Make sure you can see.**

BELOW: Model 1SPECX allows training to continue into the night. Photo courtesy New Washington Fire Dept., OH.

RIGHT: Model 2SPECX assists with search and rescue efforts. Photo courtesy QDCIP Fire, OH.



VENTRY

Solutions, Inc.

VENTRY.COM

Proudly Made in the USA

VENTRY SOLUTIONS, INC.

14128 N Hauser Lake Rd
Hauser, ID 83854 USA
(888)257-8967 Toll-free
(208)773-1194 Main
sales@ventry.com