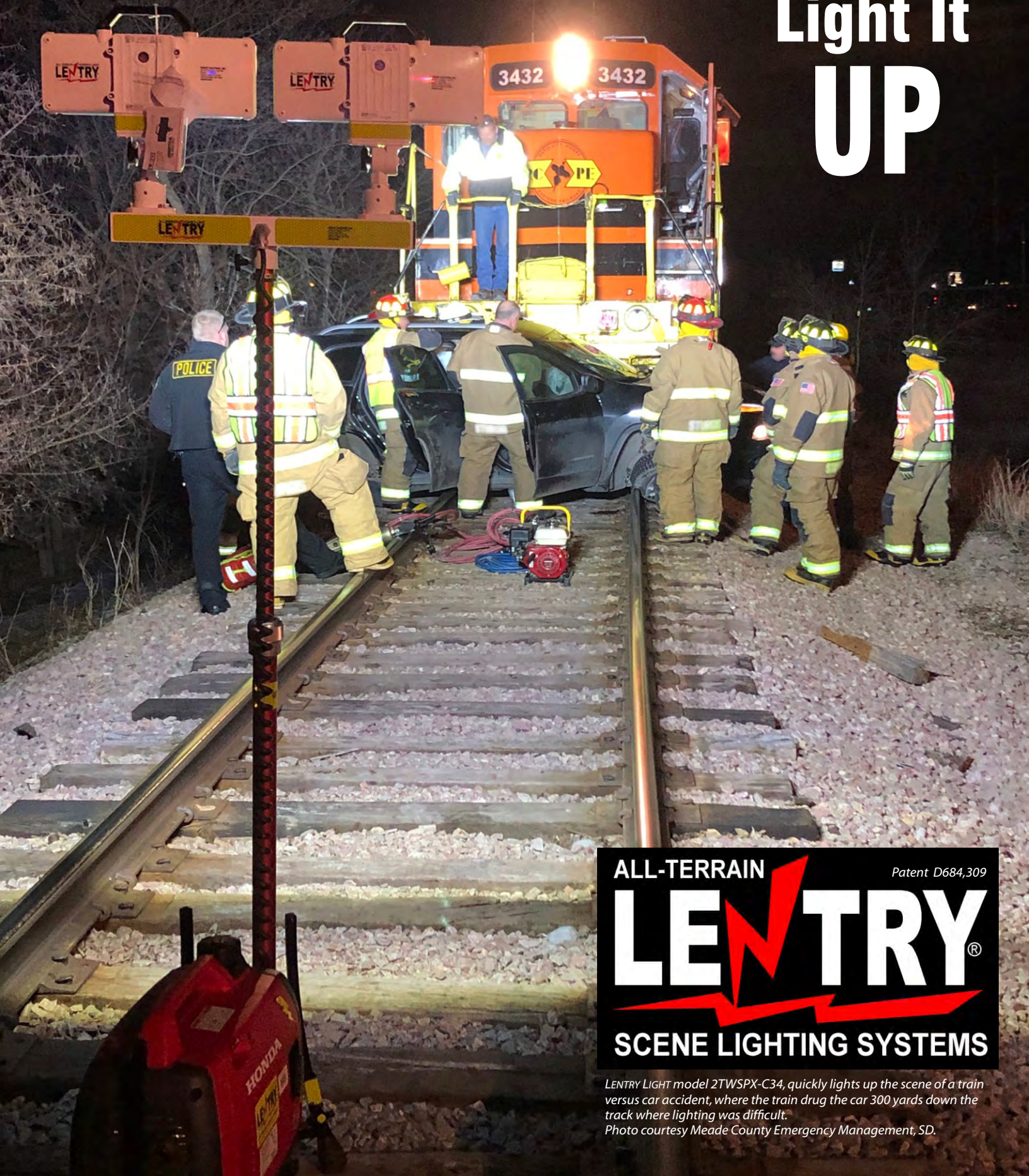


Portable Light Towers with Legs

Light It
UP



ALL-TERRAIN

Patent D684,309

LENTRY®

SCENE LIGHTING SYSTEMS

*LENTRY LIGHT model 2TWSPX-C34, quickly lights up the scene of a train versus car accident, where the train drug the car 300 yards down the track where lighting was difficult.
Photo courtesy Meade County Emergency Management, SD.*



Why Choose **All-Terrain** LENTRY PORTABLE LIGHTING?

- Lights are instant on / instant off; no cool down time needed.
- Lights are bright and efficient (20,000 to 56,000 lumens).
- Independently adjustable legs ensure a solid stance on any terrain: uneven, steep, rocky, wet, snow covered...
- LENTRY SYSTEMS are self-contained; no cords to trip over; no batteries to charge.
- LENTRY UTILITY SYSTEMS utilize preexisting power sources, allowing them to be placed wherever light is needed, including in enclosed spaces.
- Lights telescope, rotate, and articulate for ideal aiming.
- Legs adjust quickly, allowing you—not the terrain—to determine the ideal location.
- Poles and lights disconnect from the rest of the unit for storage, with the turn of a knob.
- The generator on LENTRY SYSTEMS is always level and raised above sand, snow, water, rocks, and debris.
- Controls are lifted within easy reach.
- Legs retract for compact storage and protect the generator.
- Robust, heavy-duty frames are guaranteed not to bend or break.
- One person deployment and break down in seconds.
- Long run times (nearly 9 hours on some models) before adding more fuel.
- Military-grade, lifetime-guaranteed case available with some models.
- Made in the USA.
- Five year warranties on workmanship and materials plus Lifetime Factory Support.
- Industries served include fire/rescue, emergency response, utilities, construction, law enforcement, public works, and rail.



LEFT: LENTRY Model 20PUPX with a 2200W generator and an XT height 750W Optup Halogen, with the legs extended and telescoping pole fully retracted.

BELOW: LENTRY Model 1SPECX-C23 lighting the area where fireworks were sorted before being transported to the barge. Photo courtesy Pyro Spec, CA.



LENTRY UTILITY LIGHTING SYSTEMS

LENTRY UTILITY LIGHTING SYSTEMS (shown below) are for those who already have a power source available or who currently have a LENTRY SYSTEM and would like to run a second light in another location. They can be placed anywhere, inside or out, limited only by the length of the power cord.

LENTRY UTILITY LIGHTING SYSTEMS are available with the following:

- V-Spec LED or 2-Headed V-Spec LED (28,000 - 56,000 lumens);
- A single XT height or Hi-Lite height pole;
- Utility Stand* with Adapter; and
- Case C2318, C3422, or C5022, depending on which light and pole are to be stored.

**Available without the Utility Stand for you to use your own.*



ABOVE: LENTRY UTILITY SYSTEM Model TWSPX-SS-C34 (case not shown), consisting of a 2-Headed V-Spec LED, XT height pole, Utility Stand with Adapter, and Case C3422 which holds the light head during storage and transport.

RIGHT: LENTRY Model 2TWSPX-C34 (case not shown), lighting the recovery of a submerged vehicle. Photo courtesy of Meade County Emergency Management, SD.

Multiple accessories available, expanding the functionality of any LENTRY LIGHTING SYSTEM

Accessories shown:

LEFT: Pole Light Truck Mount (circled in picture). Allows the lights on any LENTRY SYSTEM to serve as portable lighting and truck-mounted lighting. Photo courtesy Connecticut Water Company, CT.

ABOVE RIGHT: Receiver Hitch Pole Mount. Holds any LENTRY telescoping pole and light, expanding the versatility by providing additional mounting options.

RIGHT: Wheel & Handle Kit. Allows one person to easily transport the frame/generator portion of a 2200W LENTRY LIGHT SYSTEM. Vertical handle retracts when not in use.

BELOW: V-Spec LED Cases. Three cases vary in size and designed to hold V-Spec LEDs and other components. C5022 (left), C3422 (front, bottom), and C2318 (front, top).



What are LENTRY LIGHTING SYSTEMS are who uses them?

LENTRY LIGHTS are used world-wide to illuminate emergency scenes, work sites, job sites, construction projects, borders, crime scenes, railroads, special events, disaster cleanup, search and rescue operations, maintenance and repair crews, utility work, check points, flaggers and traffic control, evening sports, and more.

The list of industries that use LENTRY LIGHTS expands by the day, but includes disaster preparedness and recovery, emergency response, traffic control, law enforcement, military, border patrol, crime scene investigation, search and rescue, video production, event planning, construction, public utilities, municipalities, towing and recovery, energy, and rail.





LEFT: LENTRY Model 1STARX. Courtesy Therapeutic Riding Center of Huntington Beach, CA.

ABOVE: Before & after pictures of a construction site lit by LENTRY Model 2SPECX with a EU20i generator. Courtesy KB Trade GmbH, Switzerland.

ALL-TERRAIN

LENTRY®

PORTABLE LIGHT SYSTEMS

Service and Support

Ventry Solutions, Inc. (VSI) is a small, family-owned and operated company founded in 1972. We build the best equipment possible—in safety, quality, and value—while keeping the designs simple for minimal maintenance and intuitive, cost-effective operation.

We make outSTANDING safety tools, which are backed by 5-year “no BS” warranties on workmanship and materials. We also provide exceptional customer service before, during, and after the sale. No matter when or from whom you purchase a VSI product, you’ll enjoy Lifetime Factory Support.

**Your work has enough risks.
Make sure you can see.**

BELOW: Model 1SPECX allows training to continue into the night. Photo courtesy New Washington Fire Dept., OH.

RIGHT: Model 2SPECX assists with search and rescue efforts. Photo courtesy QDCIP Fire, OH.



LENTY Model 1STARS with a 1000W generator and standard height V-Star LED



VENTRY

Solutions, Inc.

VENTRY.COM

Proudly Made in the USA

VENTRY SOLUTIONS, INC.

14128 N Hauser Lake Rd
Hauser, ID 83854 USA
(888)257-8967 Toll-free
(208)773-1194 Main
sales@ventry.com

ALL TERRAIN

LENTRY[®]

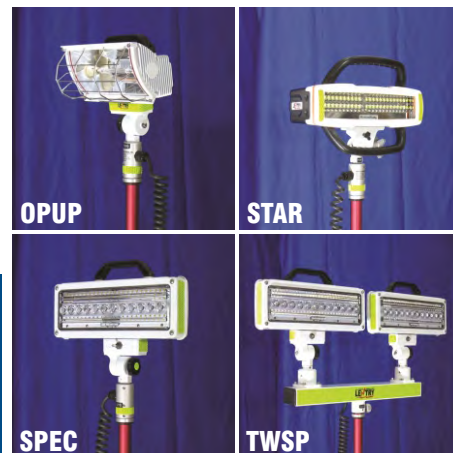
PORTABLE LIGHT SYSTEMS

Specifications

LIGHTS

All LENTRY LIGHTS are exceptionally bright and efficient, instant-on / instant-off, and articulate to aim in any direction. Choose from LED or halogen. Image 1 (right) shows all four light heads available.

ABBREVIATION AND LIGHT	LUMENS	DRAW	L x W x H	WEIGHT	WARRANTY	CERTIFICATIONS
OPUP Optup Halogen	19,600	750W	9 x 7 x 13 in	6.5 lbs	2 years	CE, ETL
STAR V-Star LED	20,000	240W	14 x 6 x 15 in	12 lbs	6 years	UL, CSA
SPEC V-Spec LED	28,000	336W	15 x 4 x 15 in	10 lbs	5 years	UL, CE, Ip68
TWSP 2-Headed V-Spec LED	56,000	672W	30 x 6 x 18 in	22 lbs	5 years	UL, CE, Ip68



HEIGHT

LENTRY LIGHTS are available in three heights, which vary by the length of their telescoping poles.

LENTRY LIGHTING SYSTEMS

(three all-terrain legs with power)

COMPLETE MODELS	HEIGHT, FULLY EXTENDED
Standard height (S) models	3.5- to 4-feet tall
Extra Tall XT height (X) models	8.5- to 9-feet tall
Hi-Lite height (H) models*	up to 13-feet tall

LENTRY UTILITY LIGHTING SYSTEMS

(four all-terrain legs, no power)

COMPLETE MODELS	HEIGHT, FULLY EXTENDED
Extra Tall XT height (X) models	up to 11.25-feet tall
Hi-Lite height (H) models*	up to 15-feet tall

Telescoping poles easily attach / detach from the LENTRY LEGS or Utility Stand for transport / storage.

POLE LENGTHS	RETRACTED	EXTENDED	WEIGHT
Standard height (S)	15 in	25.5 in	2 lbs
Extra Tall height (X)	44 in	83.5 in	4.5 lbs
Hi-Lite height (H)*	73 in	138.5 in	6.5 lbs

* Hi-Lite height models are Special Order, as we want to make sure they are appropriate for your application.

Image 2 (left) from left to right:
James (standing just over 6-feet tall),
LENTRY LIGHTING SYSTEM Models:
2STARS (3.5- to 4-feet tall),
2STARX (8.5- to 9-feet tall), and
2STARH (up to 13-feet tall);
LENTRY UTILITY LIGHT SYSTEM Models:
SPECX-SS (up to 15-feet tall) and
SPECX-SS (up to 11-feet tall).

Weight and dimensions are shown for primary components instead of complete models of LENTRY LIGHTS and LENTRY UTILITY LIGHTS, since the systems are often stowed and carried with the lights and poles separately.

Measurements are approximate and may vary a small amount due to normal fluctuations in materials and manufacturing processes.



CASES

All LENTRY LIGHTING SYSTEMS and LENTRY UTILITY LIGHTING SYSTEMS that consist of either the V-Spec LED (SPEC) or the 2-Headed V-Spec LED (TWSP) are available with a lifetime-guaranteed case.

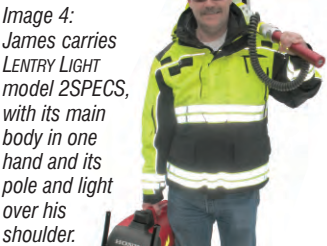
CASE	HOLDS	L x W x H (in.)	WEIGHT (empty)
C2318	One SPEC & standard height pole	22.5 x 8.5 x 18	11.5 lbs
C3422	Two SPEC or one TWSP	33.5 x 13 x 22	29.5 lbs
C5022	Two SPEC or one TWSP plus 1-2 XT poles	49.5 x 9 x 21.5	30.5 lbs



Image 3 (above): V-Spec Cases C2318 (top), C3422 (middle), C5022 (bottom).

Patent
D684,309

LENTRY LIGHT SYSTEM SPECIFICATIONS, CONT.



LEGS / STAND

LENTRY LIGHTING SYSTEMS have three outward curving legs which extend / retract independently. Extended, the legs lift the generator about 10-12 inches above the ground and provide a wide footprint for stability. Legs are part of a metal frame bolted directly to the generator; the frame holds the telescoping pole(s) and light(s) when they are attached.

LENTRY UTILITY LIGHTING SYSTEMS consist of a utility stand with telescoping legs that lock in four different positions. The Adapter, which holds the pole and light, is clamped to the stand via a tell guide plate. LENTRY UTILITY LIGHTING SYSTEMS are for those who already have a power source available.

Size and weight for the Utility Stand, as shown in Image 4, is with the Adapter attached and legs collapsed. Size and weight listed for the generator-and-legs portion, as shown in Image 5, are with the legs retracted and without poles or lights connected.

Image 5 (right): Utility stand with Adapter attached & legs collapsed.
Image 6 (far right): Generator-and-legs portion, without poles or lights connected.

As shown in Image 5	SIZE (L x W x H)	WEIGHT (lbs.)
Utility Stand with Adapter	34 x 7 x 8 in	18.5
As shown in Image 6	SIZE (L x W x H)	WEIGHT (lbs.)
1000W Generator & LENTRY FRAME/LEGS	24 x 14 x 20 in	40 - 43
2200W Generator & LENTRY FRAME/LEGS	27 x 16.5 x 21 in	59 - 62
2200W Generator with LENTRY FRAME/LEGS and Wheel & Handle Kit	27 x 16 x 22 in	68



VSI WARRANTY

The complete line of LENTRY LIGHTING SYSTEMS are covered by a five-year “No BS” warranty from Ventry Solutions, Inc. on workmanship and materials. See individual sections for warranties on generators and light heads. Lifetime warranty on V-Spec Cases. Bulbs are not covered under warranty.



Image 7: LENTRY Model 1SPECX
Image 6: Photo courtesy Kootenai Electric, ID

POWER SUPPLY

LENTRY LIGHTING SYSTEMS are powered by a 1000-watt or 2200-watt Honda® super-quiet inverter generator that produces computer-safe power.

	GENERATOR SPECS	
	1000W MODELS	2200W MODELS
Generator	Honda EU1000i	Honda EU2200i
A/C Output	120V, 1000W max (8.3A) 900W rated (7.5A)	120V, 2200W max (18.3A) 1800W rated (15A)
D/C Output	12V, 96W (8A)	12V, 100W (8.3A)
Engine	49.4 cc Honda GXH50	121 cc Honda GXR120
Receptacles	15A 125V Duplex NEMA 5-15P	20A 125V Duplex NEMA 5-20P
Noise Level	42 dB at 1/4 load 50 dB at rated load	48 dB at 1/4 load 57 dB at rated load
Fuel Capacity	0.6 gallons	0.95 gallons
Run Time	3.2 hrs at rated load	3.2 hrs at rated load
Per Tank	7.1 hrs at 1/4 load	8.1 hrs at 1/4 load
Warranty	1 year commercial use	3 years commercial use

“Rated” wattage is the power the generator can supply continuously, while “max” wattage is the supply available for short bursts.



Image 8: 1000W generator (left) and a 2200W generator (right), both mounted on a LENTRY Frame showing off their all-terrain legs.

VENTRY.COM

VENTRY
Solutions, Inc.

VENTRY SOLUTIONS, INC.
14128 N Hauser Lake Rd
Hauser, ID 83854 USA
(888) 257-8967 Toll-free
(208) 773-1194 Main
info@ventry.com



Image 9:
LENTRY LIGHT model
20PUPS,
consisting of a
2200W generator
and a single
standard height
Optup Halogen.

LENTRY LIGHTS with LEDs offer...

- Instant-on at full intensity
- Instant-off; no cool-down time needed
- Maintenance free
- Solid state electronics
- Bright white light, close to natural sunlight
- Combination flood and spot lighting
- Long life rating of 50,000 hours (5.7 years of continuous use!)
- High efficiency in output versus wattage
- Low operating temperatures
- Rugged construction
- Wide range of articulation
- Built in the USA

V-Spec LED

- 28,000 lumens
- 336W, 2.8 amp
- 5 year warranty
- UL, CE, IP68 certified
- 72 LEDs; 60 LEDs flood the work area, while 12 LEDs provide a spot light beam pattern for distance lighting
- Lens and optics are molded together, for excellent work area and distance lighting, with wide, uniform far-reaching illumination
- Innovative cooling fins are incorporated into a super-slim head
- Head resistant handle
- Available with a protective case
- Choose from LENTRY LIGHT models with "SPEC" in their name



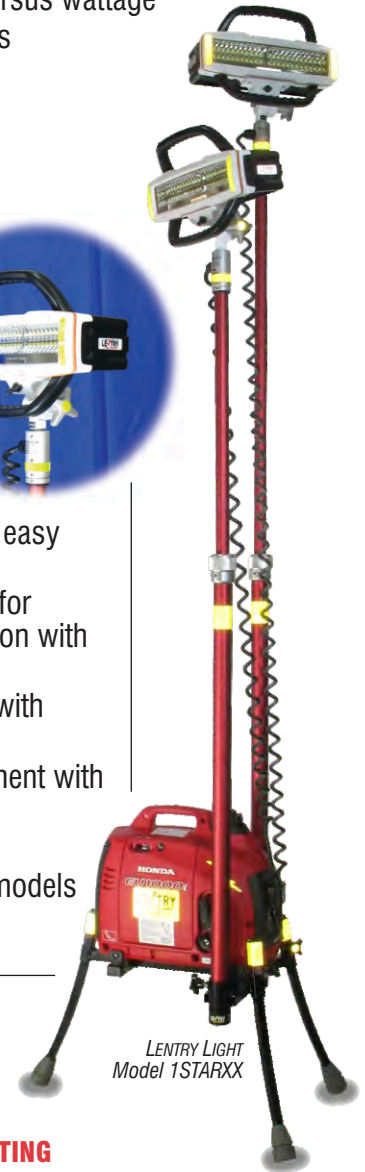
V-Star LED

- 20,000 lumens
- 240W, 2 amp
- 6 year warranty
- UL, CSA certified
- 48 LEDs for combined spot and flood lighting
- Dual ergonomic handles for easy aiming
- Engineered optical reflector for consistent, overall illumination with integrated spot light
- Durable aluminum housing with stainless steel hardware
- Optimized thermal management with protective cover
- Tempered glass front
- Choose from LENTRY LIGHT models with "STAR" in their name



2-Headed V-Spec LED

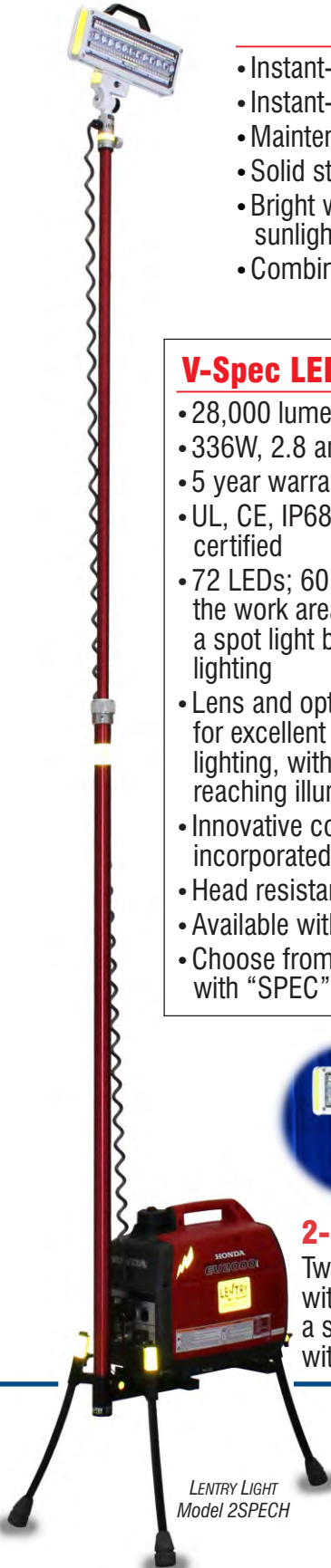
Two V-Spec LEDs on a single pole, with separate on/off switches and a shared cord. Available on models with "TWSP" in their name.



LENTRY LIGHT
Model 1STARXX

LENTRY PORTABLE LIGHTING

Ideal for industrial and emergency use, LENTRY LIGHTING SYSTEMS are bright, portable, and versatile that light large areas at a time regardless of the terrain. They turn night into day for hours at a time, without cords to trip over or batteries to charge, and are one person operational.



LENTRY LIGHT
Model 2SPECH



Ventry Solutions, Inc.

14128 N Hauser Lake Rd.
Hauser, ID 83854 USA
(888) 257-8967 | (208) 773-1194
info@ventry.com

LENTRY V-Spec Cases

Protect your LENTRY LEDs with military-grade cases

ALL-TERRAIN LENTRY® LIGHT SYSTEMS with one or two V-Spec LEDs or the 2-Headed V-Spec LED are available with lifetime-guaranteed cases to preserve your investment and keep your LEDs in top condition. The cases meet tough US Military standards for the protection of valuable equipment against air, water, theft and impacts.

Dent, impact, shatter and shock resistant, even at low temperatures where other cases would be brittle and crack upon impact. Also resistant to corrosion, solvents and fungus damage (MIL-STD-810G).

Injection molded plastic of extreme-duty polypropylene copolymer resin.

Polyethylene closed-cell inside foam is cut exactly to fit the LEDs. The foam is energy absorbing, cushioning the LED(s), keeping them from shifting, and will not disintegrate with sun or water.

Gasketed enclosure with ambient pressure equalization valve. Submersible, water-tight and dust-proof (MIL-C-4150J).

Lifetime warranty.

Made in the USA.

Will not warp, rust, rot, bend, crack or shatter.

User-friendly two-step latches add security without difficulty and guarantee against accidental release.

Padlock-able from multiple points.

Multiple, well-sized, comfortable cushion-grip handles are recessed so they rest flush with the case.

How to get a case?

LENTRY LIGHT SYSTEMS with model numbers ending in “-C23,” “-C34,” or “-C50” come with their respective cases.

“-C23” = Case C2318

“-C34” = Case C3422

“-C50” = Case C5022

C2318

22.5 x 8.5 x 18 inches. Holds one V-Spec head and one standard height pole. (Right)

C3422

33.5 x 13 x 22 inches. Holds two V-Spec heads or one 2-Headed V-Spec head. (Middle)

C5022

49.5 x 9 x 21.5 inches. Holds either one 2-Headed V-Spec head or one or two V-Spec heads and up to two XT-height poles. (Left)



VENTRY.COM

Ventry Solutions, Inc.

14128 N Hauser Lake Rd, Hauser, ID 83854
(888) 257-8967 | (208) 773-1194
info@ventry.com

© 2020 Ventry Solutions, Inc. 20200427

LENTRY® Light Accessories

LENTRY LIGHT TRUCK MOUNT

Shown at right. The Truck-Mount hardware holds the telescoping pole and light firmly to a wall, cabinet door, or side of a truck. If an outlet is nearby, the light can then be run while held in the Truck Mount hardware, expanding the functionality and versatility of your portable LENTRY LIGHTING SYSTEM by allowing use of the light while disconnected from the rest of the unit. Works with any LENTRY LIGHT, no matter its height. Part No. PLTMA



TACHOMETER / HOUR METER

Shown above. This digital meter is installed on the generator and shows total hours and RPM. It is helpful for diagnostics and maintenance. Part No. T-1031

V-SPEC CASES

Shown below. Heavy-duty, military-grade cases are available with LENTRY SYSTEMS that consist of a V-Spec LED or 2-Headed V-Spec LED light. These specialty cases protect and preserve the LEDs against air, water, and theft. They are dent, impact, shatter, and shock resistant, even at low temperatures where other cases would be brittle and crack upon impact. Custom-cut interior polyethylene closed-cell foam cushions and holds the LEDs securely. Made in the USA. Lifetime guarantee. Available in three sizes.



C2318

Holds a single V-Spec LED & standard height

C3422

Holds two single V-Specs or one 2-Headed V-Spec LED (no poles).

C5022

Holds two single V-Specs or one 2-Headed V-Spec *plus* 1-2 XT-height poles.



RECEIVER HITCH POLE MOUNT

Shown at right. Expand the versatility and functionality of any all-terrain LENTRY LIGHT with the Receiver Hitch Pole Mount. Fits standard 2-inch receivers, extends less than 6 inches beyond, and holds any LENTRY LIGHT telescoping pole. Manufactured with high-quality, USA-sourced materials and features heavy-duty powder coated steel with a hammer texture, for extreme durability to last a lifetime. Part No. RHPM2



EXTRA LIGHT BULBS

750W Halogen bulbs are used in Optup halogen LENTRY LIGHTS. They are interchangeable with the 650W bulbs used prior to 2015. Output 19,600 lumens. Part No. BULB750

CARRYING STRAP

Over-the-shoulder carrying strap, hand-made of strong nylon for easy one-person transport of LENTRY LIGHT models consisting of a 1000W generator only (model numbers beginning with "1"). Part No. L-1003

WHEEL & HANDLE KIT

Shown below. Allows for one person to easily transport the frame/generator portion of any LENTRY SYSTEM consisting of a 2000W/2200W generator (model numbers beginning with "2"). Includes a long handle that moves straight up and down. Tip toward you to roll. Pull a release and the handle may be lowered back down out of the way when not needed. Part No. L-WH2200



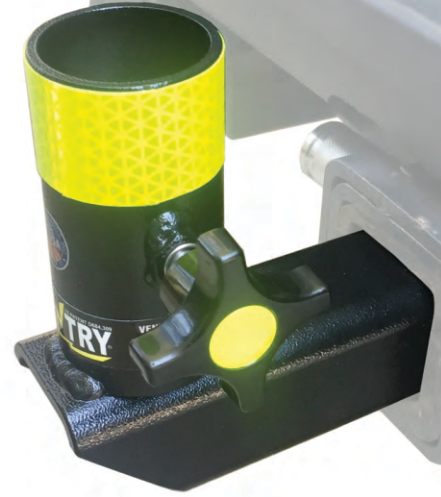
VENTRY.COM

Ventry Solutions, Inc.
(888) 257-8967 | (208) 773-1194
Fax (208) 777-0360 | info@ventry.com
14128 N Hauser Lake Rd, Hauser, ID 83854

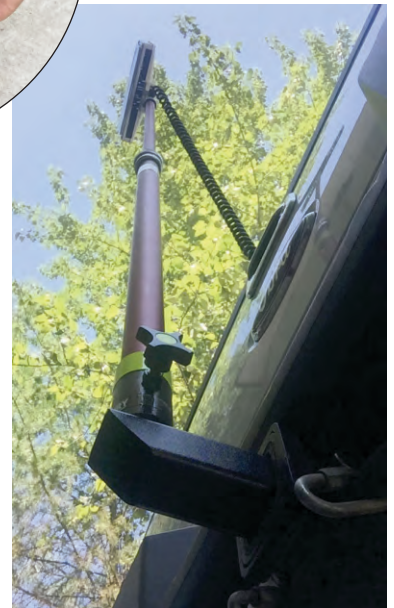
LENTRY® LIGHT Accessory Receiver Hitch Pole Mount

Vehicle Mounting Option for Telescoping LENTRY LIGHTS

The Receiver Hitch Pole Mount securely holds one telescoping pole and light from any ALL-TERRAIN LENTRY® PORTABLE LIGHT SYSTEM by Ventry Solutions, Inc. The Receiver Hitch Pole Mount expands the versatility and functionality of LENTRY LIGHTS by providing additional mounting and operation options.



- Fits standard 2-inch receivers
- Holds any LENTRY LIGHT pole, 1.75" dia.
- 9" long, 3.625" wide, 6" high and weighs 4 lbs
- Extends less than 6 inches beyond the receiver
- Large, ergonomic, easy to grab knob
- Deep base for greater height and stability
- Industrial-duty construction and materials
- Fast and easy to use
- Reflective for visibility
- Made in the USA
- 5-year warranty
- Manufactured by Ventry Solutions, Inc.
- Part number: RHPM2



LENTRY® All-Terrain
Portable Lighting

VENTRY.COM

Ventry Solutions, Inc.
(888) 257-8967 | (208) 773-1194
14128 N Hauser Lake Rd, Hauser, ID 83854
info@ventry.com

© 2020 Ventry Solutions, Inc. 20200301

LENTRY® UTILITY LIGHT SYSTEM

The **LENTRY UTILITY SYSTEM** by Ventry Solutions, Inc. is bright, portable, and all-terrain that lights large areas regardless of the scene, site, or season. They deploy and break down in seconds, include a high output LED, and lets you **SEE AND BE SEEN**.

For those who already have a power source available or who currently have a LENTRY SYSTEM and would like to run a second light in another location, the **LENTRY UTILITY SYSTEM** is a sound investment for greater safety on any job site or emergency scene.

HEIGHT

Two heights are available to choose from, which vary by the length of the telescoping pole. These heights allow the systems to stand between 6.5 feet tall to 15.5 feet tall.

COMPLETE MODELS	HEIGHT
XT height models	6.5- to 11-feet tall
Hi-Lite height models*	8.5- to 15.5-feet tall

* Hi-Lite height models are Special Order, as we want to make sure they are appropriate for your application.

POLE

- Telescopic poles can lock in any position between fully extended and fully retracted
- The ability to raise and lower the light allows for ideal positioning, illuminating a larger area the taller the light is

UTILITY STAND

- Telescoping legs with four positive locking positions: vertical, normal, and two for uneven terrain
- Kick release legs for easy leg adjustments

POLES	LENGTH (in.)	WEIGHT
XT Height	44, retracted	4.5 lbs.
Hi-Lite Height	73, retracted	6.5 lbs.
UTILITY STAND	L x W x H (in.)	WEIGHT
Collapsed for storage	30 x 7 x 8	16 lbs.

Lentry Utility Model TWSPX-SS-C34/C50 shown without the case.



**Your work has enough risks.
Make sure you can see.**

V-SPEC LED LIGHTS (both single & 2-Headed)

- Uses a combination of flood and spot lighting
- Instant-on / instant-off (no cool down time)
- Low operating temperatures
- Rated for 50,000 hours
- Maintenance free; solid state electronics
- Lights have a *tool-free* Quick Release for quick setup and break down
- Each light head tips far forward/back and rotates over 360°

LIGHT	LUMENS	L x W x H (in.)	WEIGHT
V-SPEC	28,000	14.5 x 3.5 x 14.75	10 lbs
2-HEADED V-SPEC	56,000 total	29.5 x 6 x 18	22 lbs



V-Spec LED



2-Headed V-Spec LED

CASES

- Meets strict US Military standards for protection against air, water, and impact
- Will not warp, rust, rot, bend, crack, or shatter
- Foam interior will not disintegrate with sun or water

CASE	HOLDS	L x W x H (in.)	WEIGHT (empty)
C2318	One V-Spec	22.5 x 8.5 x 18	11.5 lbs
C3422	2-Headed V-Spec	33.5 x 13 x 22	29.5 lbs
C5022	2-Headed V-Spec plus XT pole	49.5 x 9 x 21.5	30.5 lbs



Cases available: C5022 (left), C2318 (top right), and C3422 (bottom right).

LENTRY® All-Terrain,
Portable Lights



VENTRY.COM

Ventry Solutions, Inc.

(888) 257-8967 | (208) 773-1194

14128 N Hauser Lake Rd, Hauser, ID 83854 USA

info@ventry.com

©2005-2023 Ventry Solutions, Inc. 20230802

LENTRY® LIGHT Accessory Wheel & Handle Kit

NEW PRODUCT



Model 1STARS

ALL-TERRAIN LENTRY LIGHT SYSTEMS are even more portable than before with the NEW Wheel & Handle Kit!

Easy-to-roll solid rubber wheels and extendable handle allows one person to easily transport the **LENTRY SYSTEM** to/from where it's needed; simply extend the handle, tilt towards you, and off you go. When not in use, pull a release and the handle may be lowered out of the way.

Retrofits to older LENTRY LIGHTING SYSTEMS!

- Works with any LENTRY LIGHT SYSTEM with a 2000W or 2200W generator and single pole/light
- Wheels are 5 inches in diameter and are made of clear polyurethane with ABEC-5 bearings for smooth rolling
- Includes a long handle that moves straight up and down. Pull a release and the handle may be lowered back down out of the way when not needed.
- When the Wheel & Handle Kit is attached, the generator/frame portion of a LENTRY SYSTEM:
 - Dims (LxWxH) 27 x 16 x 22 inches;
 - Weighs 67.5 lbs.
- Industrial-duty construction and materials
- Can easily be retrofitted on older LENTRY SYSTEMS
- 5 year warranty plus lifetime factory support
- Made in the USA



Model 2SPECS-C23
(light head & pole inside case)



LENTRY® All-Terrain
Portable Lighting



VENTRY.COM

Ventry Solutions, Inc.
(888) 257-8967 | (208) 773-1194
14128 N Hauser Lake Rd, Hauser, ID 83854
info@ventry.com

20201009