

Truck-Mount Option for LENTRY® LIGHTS

The Truck Mount option lets the telescoping lights from LENTRY LIGHTING SYSTEMS serve double-duty as portable scene/site lighting *AND* truck-mounted lighting. With a simple turn of a knob, the telescoping lights can be moved back and forth in seconds between the portable LENTRY SYSTEMS and the truck.

The LENTRY Truck Mount Option...

- ★ Works with any LENTRY SYSTEM light.
- ★ Rugged aluminum and steel construction.
- ★ Easy one person operation for either inside or outside use.
- ★ Inside or outside use.
- ★ Holds the light firmly on a wall, cabinet door, or side of a truck for storage or operation.
- ★ Keeps lights convenient and within easy reach to grab and use with the portable LENTRY SYSTEM.
- ★ Is ideal for use with extra tall “XT” and Hi-Lite LENTRY LIGHTS, but works well with all heights.

The Pole Light Truck Mount option includes an upper plunger bracket (A), pole ring (B), and lower holding bracket (C). The two brackets are mounted to the truck while the pole ring is installed on the pole itself with a hex key.

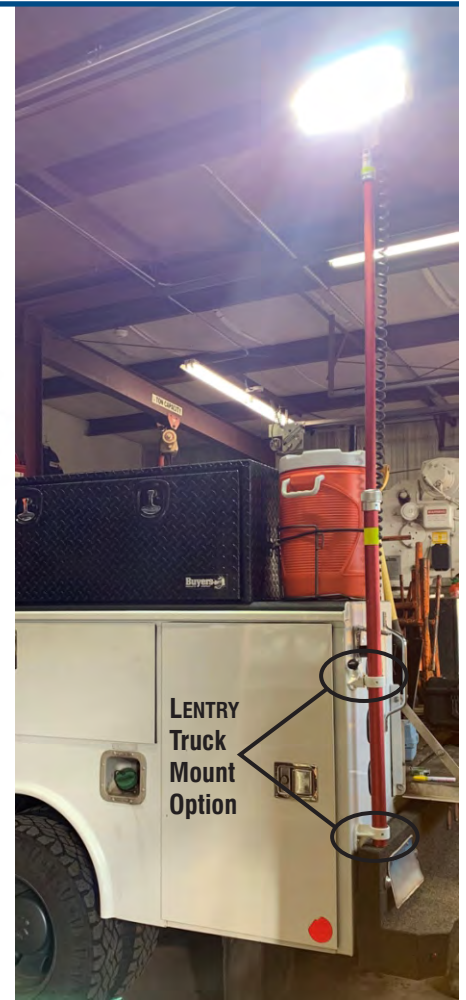
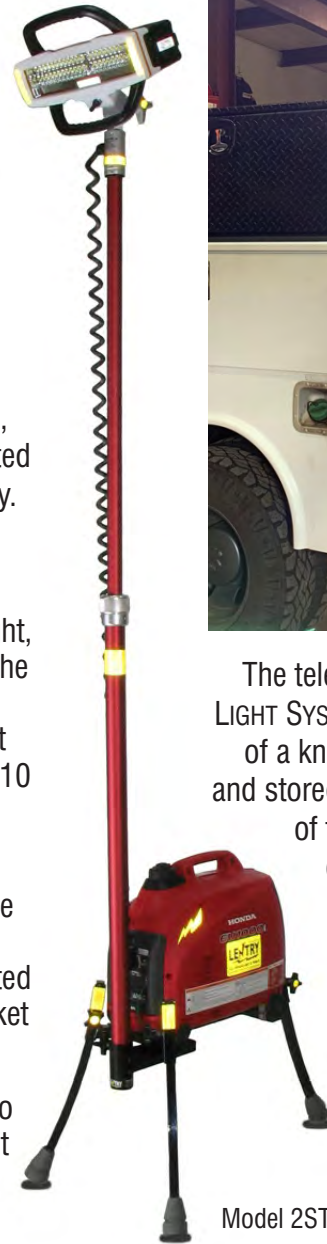


Easy To Use

To mount a pole & light, insert the bottom of the pole into the lower holding bracket (C) at an angle up to about 10 degrees.

Pull the plunger on bracket (A) and tip the pole/light so the pole ring (B) can be inserted into the plunger bracket (A).

Release the plunger to lock the pole and light securely in place.



The telescoping lights on LENTRY LIGHT SYSTEMS detach with the turn of a knob so they can be carried and stored separately from the rest of the unit. The Truck Mount option allows the lights to be easily stowed or used on the truck, as shown above with a V-Spec LED on an XT height pole. Photo courtesy of Connecticut Water Company, CT.

Model 2STARX

LENTY® All-Terrain,
Portable Lights



VENTRY.COM

Ventry Solutions, Inc.

(888) 257-8967 | (208) 773-1194

14128 N Hauser Lake Rd, Hauser, ID 83854

info@ventry.com